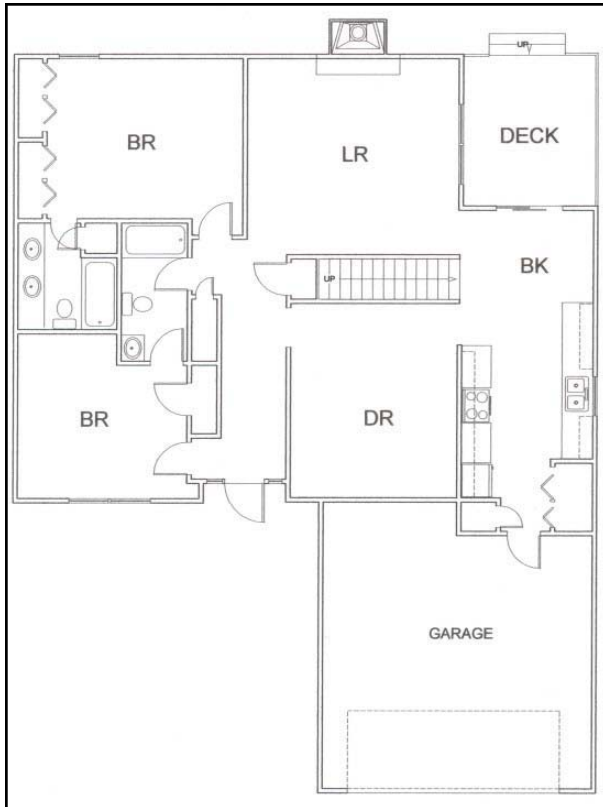


# CORPORATE PATIO HOME

#12 Stratford, St. Joseph, MO



- \*Two Bedrooms*
- \*Two Full Baths*
- \*Fully equipped kitchen*
- \*100% Furnished*
- \*Fireplace*
- \*Formal Dining*
- \*Walkout Basement*
- \*Two Car Garage*
- \*Cable*
- \*WiFi*
- \*Utilities Included*
- \*Lawn/Snow Removal*
- \*Bi-Weekly Cleaning*
- \*Washer & Dryer*

**\$1,750 Per Month**  
(One Person)

**\$100 Per Month for**  
**each additional**  
**occupant**

**For Availability, Contact:**

**[Raymond A. Sisson, CCIM](#)**

Coldwell Banker Commercial General Properties

2700 N. Belt Hwy., St. Joseph, Missouri 64506

Office (816) 364-2700 / (800) 530-5938

Fax (816) 279-2987

E-mail: [raysisson@stjoseph.net](mailto:raysisson@stjoseph.net)

This web site located at:

[www.stjoseph.net/cb/12stratford](http://www.stjoseph.net/cb/12stratford)

[www.raysisson.net](http://www.raysisson.net)